



THE HUB

A PROACTIVE & COLLABORATIVE
APPROACH TO PUBLIC SAFETY

PREMISE

- Often times an individual or family in crisis are in need of multiple services that already exist, however, these services are spread amongst various agencies & different systems



PREMISE

- Services may be provided by one agency, while needs that could be addressed by another agency go unidentified or underserved



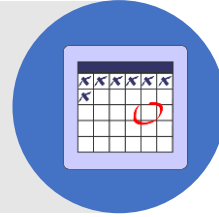
PREMISE

- The basic premise of the HUB is to bring these agencies together to find quick, multi-agency intervention and support to those individuals and families in crisis



THE HUB MODEL

LOGISTICS



- Meet twice a month - approximately 90 mins.
- Meetings held at neutral location, such as firehouse or library.
- Representatives from various agencies throughout Montgomery County attend each meeting.
 - Representatives given the opportunity to present de-identified situations in which people are in crisis or are at a high risk of crises
 - While any attendee can present a scenario, the Police Department generally brings most scenarios to the group
 - Typically involve, but not limited to, cases of domestic abuse, substance abuse, mental health issues & at-risk youth.
- Each meeting begins with a review & follow-up of situations presented at the previous HUB meeting. Keeps participating agencies accountable to each other.

- Lower Merion Police Department
- Lower Merion School District – Guidance Counselling
- Montgomery County Women’s Center
- Office of Children and Youth
- Child and Family Focus
- Adult and Juvenile Probation
- Access Services
- Montgomery County Office of Drug and Alcohol
- Bryn Mawr Hospital – Inpatient Behavioral Health Unit
- Lower Merion Counselling
- ElderNET
- Victims Services



LIST OF POSSIBLE ATTENDEES

FOUR THRESHOLD MODEL OF INFORMATION SHARING

1. Basic information is shared about the scenario - establish the concern is multi-systemic and requires group intervention.
2. The originating agency describes risk factors using de-identified language.
3. If the group agrees that there is a risk/safety concern present requiring intervention, originating agency then shares minimal identifying information that helps specify agency roles.
4. Collaborating agencies with a direct role in the intervention share sufficient identifying information to support the intervention.

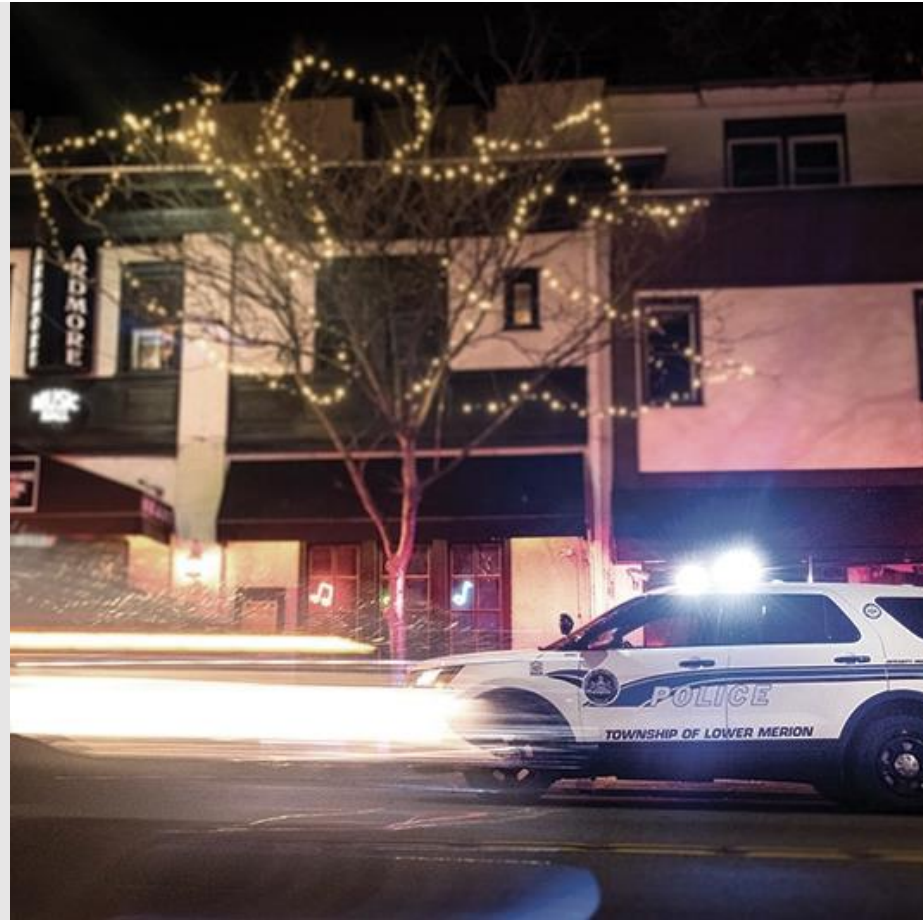


PROGRAM BENEFITS AND IMPLEMENTATION



BENEFITS

- Allows for quick, multi-agency intervention and support to residents in or at high risk of crisis.
- This proactive approach has been shown to drastically reduce repeat calls for service to the same addresses.
- Continual partnership between the Police Department, the School District, and various social service agencies will strengthen relationships and allow the Department to stay abreast of new services and programs provided by the various agencies that attend.



IMPLEMENTATION

- No financial cost to the Department and minimal time expenditure.
 - Approximately 1-2 hours per week for one officer.
 - Operation of The HUB can be tasked to the Crime Prevention Unit, eliminating any additional burden to patrol units.
- Initial training should be provided to all officers and can be completed via PowerDMS.
- Representatives from various social services agencies throughout Montgomery County are already participating in The Abington HUB and Norristown HUB and have expressed interest in participating in a HUB within Lower Merion.

Example #1

Background

- Jane Smith, grandmother, resides at the home with 8 year old grandson whom she has custody of.
- Samantha, daughter of Ms. Smith and mother of 8 year old child, is a known mental health consumer.
- Between April 2018 & October 2018 there have been 12 calls for service at residence and resulting in 2 non-traffic citations.
 - Criminal Trespass - 5 calls
 - Emotionally Disturbed Person - 4 calls
 - Domestic Dispute - 3 calls

Application of The HUB

Multiple agencies could be utilized, such as:

- Access Services
- Women's Center of Montgomery County
- Adult Probation
- Montgomery County Office of Children and Youth
- Lower Merion School District Social Worker
- Multi-agency response would ensure that all members of the family are receiving all available supports and services

Example #2

Background

- Home is owned by Linda Jones who lives with her two children. Ms. Jones & her ex-husband, John, have a contentious relationship.
- Between April 2018 & December of 2018 there have been 12 calls for service at residence and resulting in 1 non-traffic citation being issued and 1 arrest for simple assault.
 - Simple Assault - 1
 - Disorderly Conduct - 4 calls
 - Other - 7 calls
- In one incident, Officers on scene describe the home as being in a state of disarray and infested with animal waste & bed bugs.

Application of The HUB

Multiple agencies could be utilized, such as:

- Women's Center of Montgomery County
- Adult Probation
- Montgomery County Health Department
- Montgomery County Office of Children and Youth
- Lower Merion School District Social Worker